



Carpal Tunnel Syndrome

Lakeside Medical, LLC

Volume 1, Issue 2

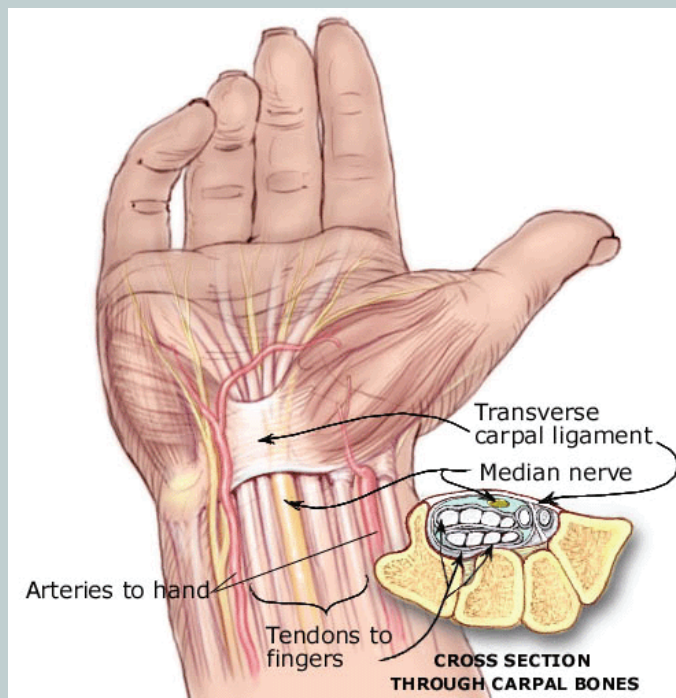
Special points of interest:

- 5.8% of women will develop CTS within their life
- CTS, by individual case, is responsible for more working days lost than any other illness in the US working population
- Carpal tunnel syndrome results in billions of dollars of workers compensation claims annually

For information or to schedule your test date contact your Physician Representative at 1-800-416-1767.

Carpal Tunnel Syndrome

Carpal tunnel syndrome (CTS), an entrapment neuropathy of the median nerve at the wrist, is one of the most common peripheral nerve disorders with a population prevalence of 5.8% in women and 0.6% in men with the incidence rate increasing. Though sometimes considered a trivial condition, it is a significant health problem. CTS and hearing loss was found to account for more morbidity, measured by cases and working days lost, than any other illness in the US working population. The mainstay of diagnosis remains clinical assessment of the patient history, with nocturnal paraesthesia in the median nerve distribution being the most characteristic symptom. Definite sensory and motor signs are present in more advanced cases but severe symptoms requiring treatment may often precede these.



Electrodiagnostic testing (mainly nerve conduction studies) can be quite helpful in confirming the diagnosis, assessing the severity of nerve damage, and excluding other lesions. The sensitivity of electrodiagnostic testing have ranged from 49 % to 84% with specificity 95% or higher.

The following studies will confirm or refute a CTS Diagnosis:

Motor nerve conduction studies with F responses

Ulnar nerve study

Sensory nerve conduction studies

By performing the above comprehensive study, we will be able to:

- Confirm your diagnosis of CTS.
- Assess the severity.
- Rule out a superimposed condition, especially in diabetic patients, where peripheral neuropathy may be superimposed to an entrapment neuropathy.

1. **Bland JD. Carpal tunnel syndrome. *Curr Opin Neurol* 2005;18:581-585.**
2. **Dumitru D, Amato AA, Zwartz MJ. *Electrodiagnostic medicine, 2nd ed. Philadelphia: Hanley & Belfus, 2002***



Lakeside Medical, LLC

2516 Waukegan Rd
Suite 386
Glenview, IL 60025

Tel: 800-416-1767
Fax: 888-317-4206

Mailing Address Line 1
Mailing Address Line 2
Mailing Address Line 3
Mailing Address Line 4
Mailing Address Line 5

*"We treat others as we
would like to be treated.
Your concerns are our
concerns."*

Visit us on the Web at
www.lakesidediagnostics.com



Welcome To Lakeside Medical

Lakeside Medical is a national provider specializing in quality electrodiagnostic (EDX) testing services. By using our services you can make more accurate diagnoses and offer more comprehensive care for patients presenting a wide range of symptoms, including: neuropathies, muscle weakness, radiating pain, carpal tunnel syndrome, sprains and strains, and other neuromuscular disorders.

First and foremost, we strive to forge long term win-win relationships with our clients. Built on a foundation of trust, Lakeside Medical adds value as a powerful clinical and economic resource.

- Nerve Conduction Velocity (NCV)
- Somatosensory and Dermatological Evoked Potentials (EPs)
- Musculoskeletal Ultrasound Imaging
- Vascular Studies

Lakeside Medical brings the benefits of having a neurologist and a radiologist under your roof. Convenient onsite EDX testing will improve the health of your patients and your practice.

Contact us today for more information.

*"I am first and foremost a caregiver, but my practice is a business; Lakeside is great for business."
- DC, Columbus, OH*

Need a duplicate copy of a report, fresh patient referral forms, or just looking to review our clinical resources? Visit our new website at www.lakesidediagnostics.com.



"We treat others as we would like to be treated. Your concerns are our concerns."

Why Perform Vascular Tests?

A directed history and physical examination will frequently establish the presence of peripheral vascular disease, but leave much doubt regarding the severity of the disease or its relationship to the patient's symptoms.

The need to diagnose vascular disease is gaining recognition everywhere. Physicians are recognizing and talking about the strong correlation between vascular disease and coronary artery disease. Acknowledged, reputable sources, including the New England Journal of Medicine, have addressed this topic. It also was discussed at a recent American Heart Association meeting. According to a 10-year study by Drs. Michael Criqui and Arnost Fronck of the University of California, San Diego, patients with peripheral arterial disease are 12 times more likely to have cardiovascular disease and are 5 times more likely to die from a heart attack than are patients with no peripheral arterial disease.¹

Vascular testing is a non-invasive method of accurately screening for both arterial and venous disease. Tests can be conducted in less than 15 minutes. Studies indicate that 80% of patients with peripheral vascular disease also have coronary heart disease. Early recognition of peripheral vascular disease can alert you to the need for further testing and follow-up. If peripheral arterial disease, deep venous thrombosis, carotid disease and other occlusive vascular conditions are discovered early, appropriate medical treatment often can prevent debilitating circulation problems, stroke, heart attack or amputations.

¹ Criqui, Michael and Fronck, Arnost; *Protocols, 1991, P. 3-6*